



4 DAY CLASSIC  
CAR REGULARITY *RALLY*  
MAY 30TH TO JUNE 3RD, 2023



PENNINES, THE YORKSHIRE DALES,  
AND THE CHEVIOTS



BESPOKERALLIES.COM



# Pennine

10000





**Following the success of our new Pennine 1000 we are delighted to bring the rally back in May 2023. This rally offers a stunning journey across the backbone of England and has proved to be a great addition to our events calendar.**

This FIVA sanctioned four-day Regularity rally explores the hills and mountains of northern Britain, taking in the stunning scenery of the Pennines, the Yorkshire Dales, the Cheviots and the Lake District. Run almost entirely on tarmac we use our own Virtual Marshal™ system which registers and displays your regularity times throughout the day. It tracks your car, provides accurate timing and an automated results service.

Day one sees us setting off from the start line at Darlington's Headlam Hall where we will stay for all four nights.. Heading south and west into the majestic Yorkshire Dales we have an exquisite day in the magnificent rolling countryside which plays host to heather moors, free-ranging sheep, wildflower meadows and ancient woodland, with the occasional reminder of the area's mining and industrial past.

On our second day we head north to Kielder Forest through the Northumberland National Park, just putting a toe into Scotland before heading south again. This is an undisturbed part of the country, crisscrossed with the routes of ancient cattle drovers, Hadrian's Wall and the ruins of ancient hillforts peppering the landscape.

On the final day, we are in the North Pennines and touch on the Lake District. For much of the day we will have the roads pretty much to ourselves, as we climb up and across a landscape of heavily glaciated mountain valleys, with tumbling upland rivers, and through ancient forests and characterful market towns.

The Regularity competition sections will allow you to take full advantage of the quiet roads and test the skills of your navigator. There is no night-time driving and most of the route and competition will be on tarmac.

Unfolding over four days in Summer, this stunning journey along the UK's longest mountain range is sure to reignite your sense of adventure and rekindle your love of the Great British countryside.



# ITINERARY

## ARRIVAL - MAY 30TH

Our adventure begins at the magnificent 16th century Headlam Hall & Spa, a historic house that was once owned by the Stobart family. Since 1977 it has been owned by the Robinson family who have developed it into the stunning spa and nine hole golf resort that we will enjoy. Arrive for check in from 3pm and register your car – afterwards you can take advantage of the facilities: book a spa treatment, take a dip in the indoor heated pool, or play a round of golf.

## RALLY DAY 1 - MAY 31ST

We set off under the starting flag at 9am and head south across the Tees, Swale and Ure rivers in the Yorkshire Dales National Park. The landscape opens up into a patchwork of heather moors and peatlands, and as the road climbs higher we pass historic mines and limestone escarpments. These are roads to be savoured, with stunning views in all directions.

Before long we make our way into the wild isolation and big open skies of the Yorkshire Dales and we are soon rewarded with a breath-taking drive, passing by Settle, one end of the famous Settle to Carlisle railway as well as the famous Ribble Viaduct.

Our road passes between Yorkshire's famous three peaks: Wharfedale to the North and Inglebrough, both standing at well over 2,000ft.

We head back north through Wharfedale and Bishopdale through iconic landscapes of drystone walls, small stone farmhouses and bleak but beautiful moors. We drive past the famous Aysgarth falls before heading up towards Arkengarthdale, the most northerly of the dales within the National Park. Its largest village, Lanthwaite, is famous for being used in the title shots for the classic series 'All Creatures Great and Small'.

## RALLY DAY 2 - 1ST JUNE

Heading north, today's route takes us along what was once the wild north-west frontier of the Roman Empire, with Caledonia beyond. 20 miles or so further on we are crossing the modern-day Scottish border and entering the sparsely populated Southern Uplands beyond, with their hillside farms, open moorland, fells and forest. It all feels like a very well-kept secret.

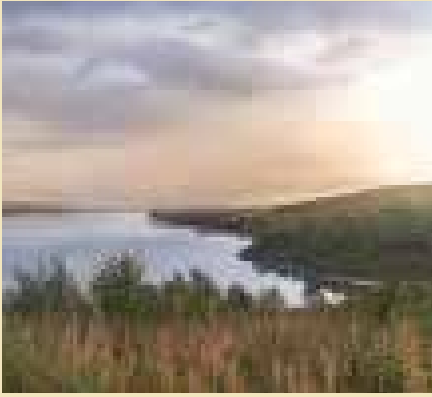
Initially passing by Derwent Reservoir, we continue through Northumberland National Park and Kielder Forest. Turning south to run along Hadrian's Wall, we drive back through the North Pennines, winding our way to Headlam Hall.

The landscape is studded with tumbling waterfalls, sweeping moorland views, dramatic upland dales, stone-built villages and snaking stonewalls. It is notable for rare flora and fauna, including wild alpine plants not found elsewhere in Britain. It is also home to red squirrels and diverse birds of prey. The North Pennines comprise 40% of the UK's upland hay meadows and 30% of England's upland heathland.



\*Details subject to change to facilitate the correct running of the event





### RALLY DAY 3 - 2ND JUNE

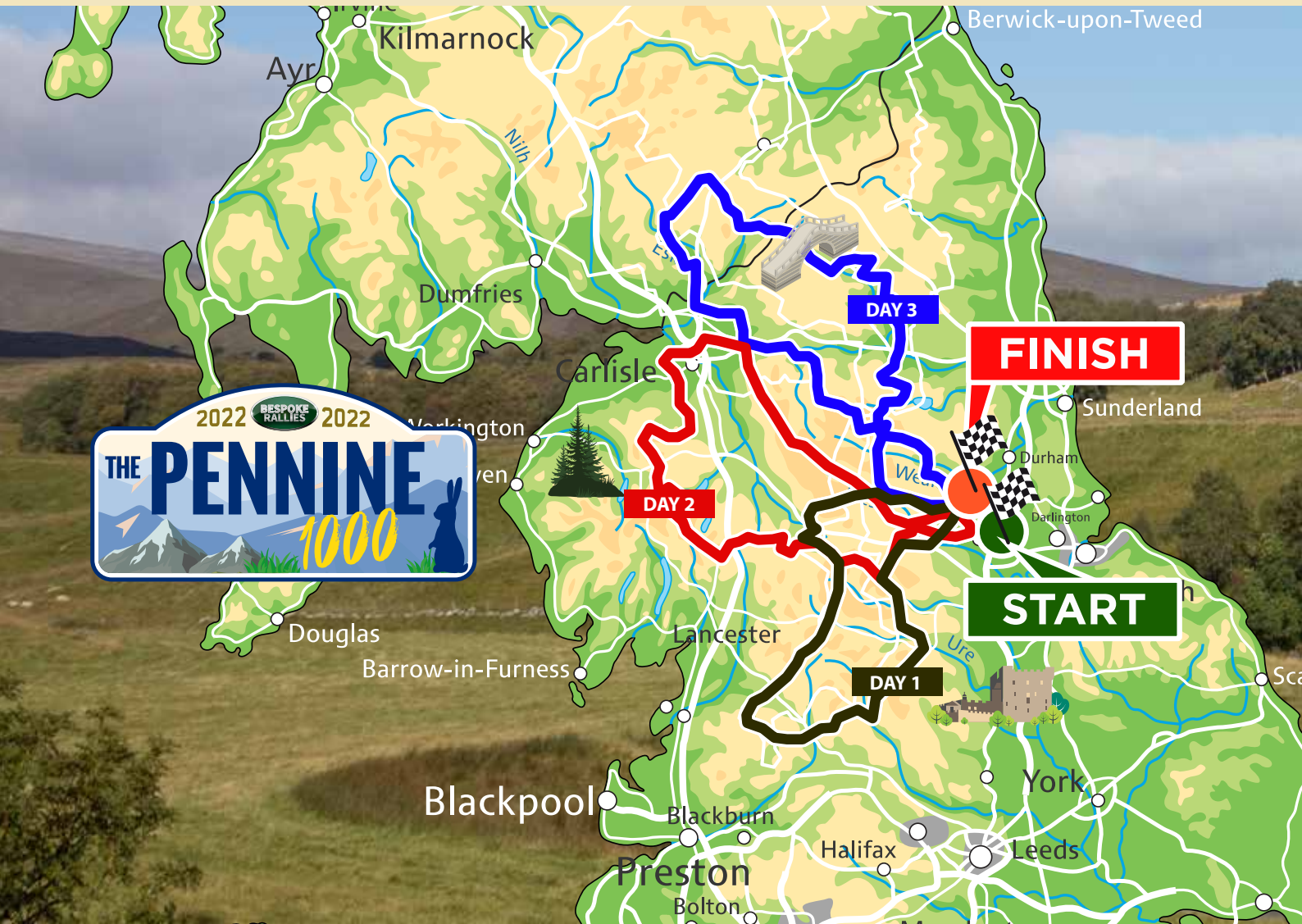
We head north and west today, traversing once again the North Pennines as far as Carlisle before criss-crossing our way to the edge of the Lake District, visiting Ullswater and Hawkswater on the way.

The Lake District is a popular vacation destination, known for its glacial ribbon lakes, rugged fell mountains and historic literary associations. It also has England's highest mountain and deepest and longest lakes.

From Ullswater we head down past Askham village where Askham Hall is the ancestral home of Lord Lonsdale - he of the boxing belt. From there we head to Butterwick and Shap to Great Asby. On the home stretch after Wishaw we skirt Barnard Castle which we visited earlier in the day and head back to Headlam for a well earned gala dinner and prize giving.

### DEPART AFTER BREAKFAST - 3RD JUNE

# Route Map







## CLASSES

### Vintage:

VG. 1920 to 1949

### Classic:

C1. 1950 to 1959

C2. 1960 to 1969

C3. 1970 to 1979

C4. 1980 to 1989

TT. Touring

\* Classes may be combined as necessary

\*\* Please note: route and timings may be changed without notice

## WHAT'S INCLUDED

- An entry for two people and their car
- Bed and breakfast in a twin or double room for four nights
- Evening meals included
- Tulip roadbook and Maps
- Our experienced team
- Beautiful scenery
- Roads less travelled
- Rally Awards
- Mechanical assistance
- Photobook of the event
- Film of the event
- Event regalia
- Our Virtual Marshal timing system

VIRTUALMARSHAL



## WHAT YOU NEED

- A well prepared classic car
- Halda/Trip-Master or similar
- Clocks
- A car that fits into one of our classes
- A co-driver/driver

## HOW TO ENTER

Entry Fee: £3,250. Entry fee includes: Bed and breakfast in a twin or double room for four nights for two people in one room (single room available for supplement), detailed tulip book, maps, stunning route, briefing, evening meals, mechanical assistance, event regalia, competition, prizes. The Pennine 1000 is a FIVA registered event.

Phone: + 44 (0)1483 271 699  
or download an entry form  
by scanning the opposite qr code.





30 DAY CLASSIC  
TOURING RALLY

Join us

OCT 18TH TO NOV 18TH, 2023

In 2023 we will celebrate the 75th anniversary of this event with the second Grand Prix of South America which follows the original route where possible. Where the roads are new we find the old and where they have been covered in tarmac we look for dirt.



BESPOKERALLIES.COM

     [bespokerallies](https://www.bespokerallies.com)